



# DEMON ↓ body worn video manager

Product | Information Sheet

## The most complete management solution for Body Worn Video

DEMON bwv manager is designed specifically to manage the vast quantities of video and audio information captured from head cams and body worn video equipment. Developed in conjunction with UK police services, it has been created to enhance the business processes that individual services employ for managing and sharing digital evidence throughout their organisations.

### End-to-end evidential integrity

Body worn video is now becoming an integral part of the daily operations of police services worldwide. Today's challenge is to effectively handle, analyse and store digital evidence from body worn video while minimising the administrative burden on the police service. Available in standalone or networked versions, DEMON bwv manager ensures the integrity of evidence from capture to final presentation in custody suite or court.

### A comprehensive back-office solution

DEMON bwv manager is much more than a means to automate the downloading and storing of information from body worn equipment. Organisations can manage physical assets – such as cameras and storage cards – and assign them to specific users. It automates evidence output including witness statements and evidence continuity statements. It enables the rapid and intelligent tagging and retrieval of incidents of interest. It accommodates the input and output of video, audio, still image and text files to create a body of evidence for a specific investigation.



### At a glance

- Intelligently tag, index, retrieve and analyse video and audio information from BWV
- Complies with DPA, ACPO, NIM, MoPI and Home Office guidelines
- Supports existing and emerging digital video formats
- Completely integrated asset management system
- Camera and accessory independent
- Scalable from single user to enterprise system
- Economical 'Per Workstation' pricing

### In action

#### Camera Users



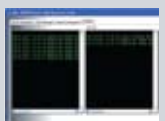
#### Workgroup Client



#### Workgroup Server



#### Enterprise Server



- Fast check in/check out
- Barcode driven management
- User assignment and tracking

- Accurate and fast video download
- Intelligent indexing and analysis
- Extensive output options

- Secure video store
- Manage multiple file formats
- User administration

- Common metadata store
- Network and Web access
- Integration with business systems

## Downloading digital evidence

Data from head cams and body worn equipment can be automatically copied to hard disk, CD-ROM or DVD WORM (Write Once Read Many). The system supports all modern video file formats, including AVI and ASF, and can be integrated with new codecs as they appear. All video and audio information downloaded and stored on DEMON bwv manager is recorded by operator, unit identifier, date and time. It also records which information has been viewed, which has not and which are regarded as significant. All data is marked by time and date so that it can be quickly located when needed. Importing camera data onto the system takes place immediately on the device being attached so that cameras are always available for use on the next shift.



## Adding intelligence to BWV information

DEMON bwv manager offers a great deal more functionality than evidential quality storage. At its core is the world's first 'video database' system with unique and advanced content management, archiving, searching and intelligent retrieval functionality. All evidence from body worn video can be quickly reviewed, tagged and retrieved. Information can be output in a wide variety of formats, including edited video, still images and text files.

## An integrated approach

The power of DEMON bwv manager is the way it integrates body worn equipment more closely into operations or the evidence process chain. Details from the captured video can automatically be included in areas such as recorded witness statements. CCTV footage and other relevant text and audio files can be added to the information from body worn equipment to provide a single point of view of an incident or investigation. The audit trail from the system can provide valuable information for Home Office camera use and effectiveness reporting. The system is adaptable to integrate with the BWV protocols used by individual police services.



## A flexible and scalable architecture

DEMON bwv manager has been designed to be scalable from a single workstation solution for small installations of less than 6 cameras to enterprise solutions that stretch across the organisation's entire use of body worn equipment and integrates with other business systems. Its client/server architecture means that extra systems can be rapidly and securely added to a server and workgroup 'clusters' attached to the Enterprise server via an internal LAN or the internet when required.

## Features focus

### Asset management

Cameras and accessories can be automatically booked in and out using bar code or RFID. The system tracks where the equipment is, who has it and its current status. The check in/check out process speeds up dramatically. Bar code labels can be automatically created, reducing the need to contact the supplier when managing new assets or replacing existing labels.

### Evidence quality storage

Imports large volumes of data from removable storage cards, USB and networked devices. A 'bit for bit' master is created automatically, with copies created for editing, analysis and sharing. Cameras and cards are associated to specific users of the system for evidential integrity purposes. Data deletion can be pre-defined based on evidential value.

### Intelligent management

All BWV evidence can be viewed in real time, frame-by-frame or automatically reviewed to search for points of interest against pre-defined criteria. Points of interest can be marked with date, time and any relevant notes on the event. Multiple and overlapping points of interest can be added to a single piece of video footage to enable the efficient processing of multiple incidents.

### Future growth

DEMON bwv manager is designed for organisations to grow their use of body worn video, from pilot to organisation-wide roll-out. This is reflected in its pricing structure. Unlike most other BWV management systems, it is priced 'per workstation' to deliver much greater value and Return on Investment.

## Contact us

For more information on DEMON bwv manager, contact Scyron today on 08454 606 999, email [sales@scyron.com](mailto:sales@scyron.com) or visit [www.scyron.com](http://www.scyron.com)

**SCYRON**  
DETECT & DETER