



# video inspector

## Plus Pack 2011

Centerprise International Trading as Scyron, Longbridge Technology Park, 1 Devon Way, Birmingham, B31 2TS  
TEL: 08454 606 999 EMAIL: [sales@scyron.com](mailto:sales@scyron.com) WEB: [www.scyron.com](http://www.scyron.com)

# CONTENTS

<b>Introduction to Video Inspector Plus Pack .....</b>	<b>3</b>
<b>The Video Inspector Plus Pack Launcher Tour .....</b>	<b>3</b>
<b>File Menu .....</b>	<b>3</b>
<b>Activation Menu .....</b>	<b>3</b>
<b>Change Project Key .....</b>	<b>3</b>
<b>Activation Status .....</b>	<b>4</b>
<b>Help Menu .....</b>	<b>4</b>
<b>Video Analysis Applications Tab .....</b>	<b>5</b>
<b>Scyron Updates Tab .....</b>	<b>5</b>
<b>Project Configurator .....</b>	<b>6</b>
<b>Launch Project Configurator .....</b>	<b>6</b>
<b>Create New Project .....</b>	<b>6</b>
<b>Select Default Project Base .....</b>	<b>7</b>
<b>DVD Bulk Importer .....</b>	<b>8</b>
<b>Launch DVD Bulk Importer .....</b>	<b>8</b>
<b>DVD Bulk Importer Tour .....</b>	<b>9</b>
<b>Export Path .....</b>	<b>9</b>
<b>Change path .....</b>	<b>9</b>
<b>Maximum simultaneous copies .....</b>	<b>9</b>
<b>Refresh Drives .....</b>	<b>9</b>
<b>Proceed with Copy .....</b>	<b>9</b>
<b>Status Bar .....</b>	<b>9</b>
<b>Batch Analyser .....</b>	<b>10</b>
<b>Launch Batch Analyser .....</b>	<b>10</b>
<b>Batch Analyser Tour .....</b>	<b>10</b>
<b>File Menu .....</b>	<b>10</b>
<b>Batch Job Menu .....</b>	<b>10</b>
Add New Batch Job or click [NEW JOB] .....	10
Begin Processing or [RUN JOBS] button .....	12
Pause All Jobs .....	12
Delete Job or [DELETE JOB(s)] button .....	12
<b>View Menu .....</b>	<b>12</b>
Refresh Job Display .....	12
Current Log .....	12
Previous Logs .....	12
<b>Help Menu .....</b>	<b>12</b>
About .....	12
<b>[NEW JOB] .....</b>	<b>12</b>
<b>[RUN JOBS] .....</b>	<b>12</b>
<b>[VIEW RESULTS IN VIDEO INSPECTOR] .....</b>	<b>12</b>
<b>Video Utilities .....</b>	<b>13</b>
<b>Launch Video Utilities .....</b>	<b>13</b>
<b>Video Utilities Tour .....</b>	<b>14</b>
Import Video from a DVD video Disc Wizard .....	14
Export Video from some files to a DVD video .....	15
Combine Video to Single Video .....	16
Convert Video to AVI or MPEG 2 .....	18

# Introduction to Video Inspector Plus Pack

This manual takes you through the processes using the applications included with the Video Inspector Plus Pack.


## The Video Inspector Plus Pack Launcher Tour



The Video Inspector Plus pack consists of 5 applications designed to fully utilise and optimise your time and resources in the video analysis tasks you have to perform.

The applications have been laid out to reflect the full process path if you purchased the WORKGROUP licence, where you launch the applications in the order on screen.

### File Menu

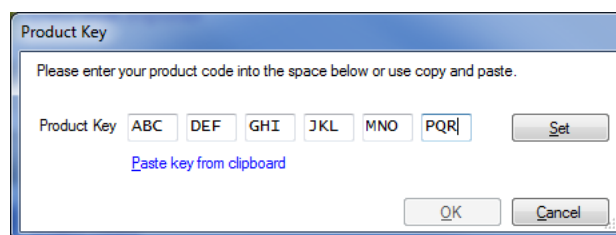
The file menu consists of one function, EXIT. To close the launcher, you can select **FILE / EXIT**, hold **[ALT] + [F4]** or click on the  in the top right of the Launcher.

### Activation Menu

The activation menu consists of two options.

#### Change Project Key

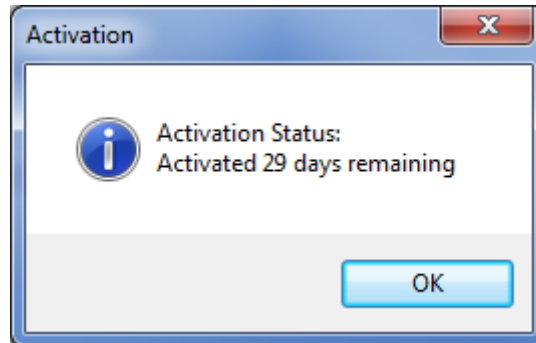
This option both displays your current product key and allows you to enter a new product key supplied by Scyron. You may need to use this option if your current licence needs updating to include a different selection of the applications installed in the launcher.



You can either enter the code manually, or copy it and click on the **[PASTE KEY FROM CLIPBOARD]**. You then click on **[SET]** and if the key is valid, the **[OK]** will become available.

### Activation Status

This option displays your current Activation Status and the duration of your licence.

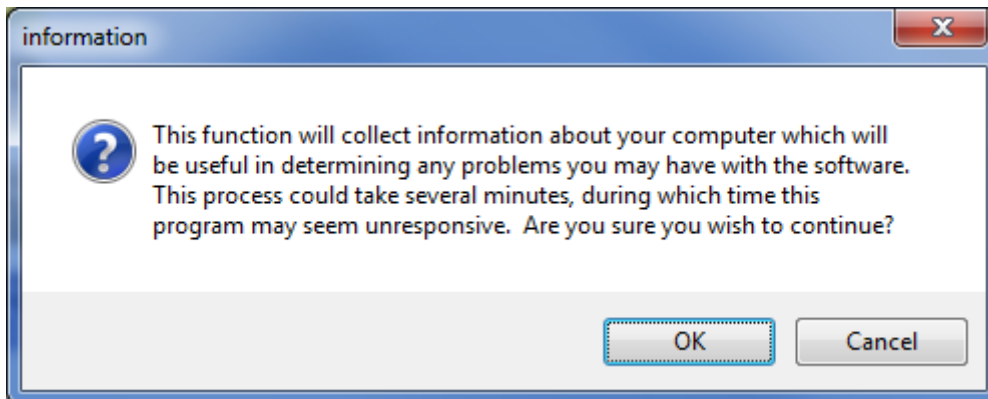


### Help Menu

This option displays the information about your Launcher. You can also click **[F1]** to display this information.

The Workstation Information option provides valuable information about the setup of your machine, to be used as diagnostic information by Scyron to aid in the support of your pack.

When you select this option, the Information screen is displayed (below)



Click **[OK]** to run the process

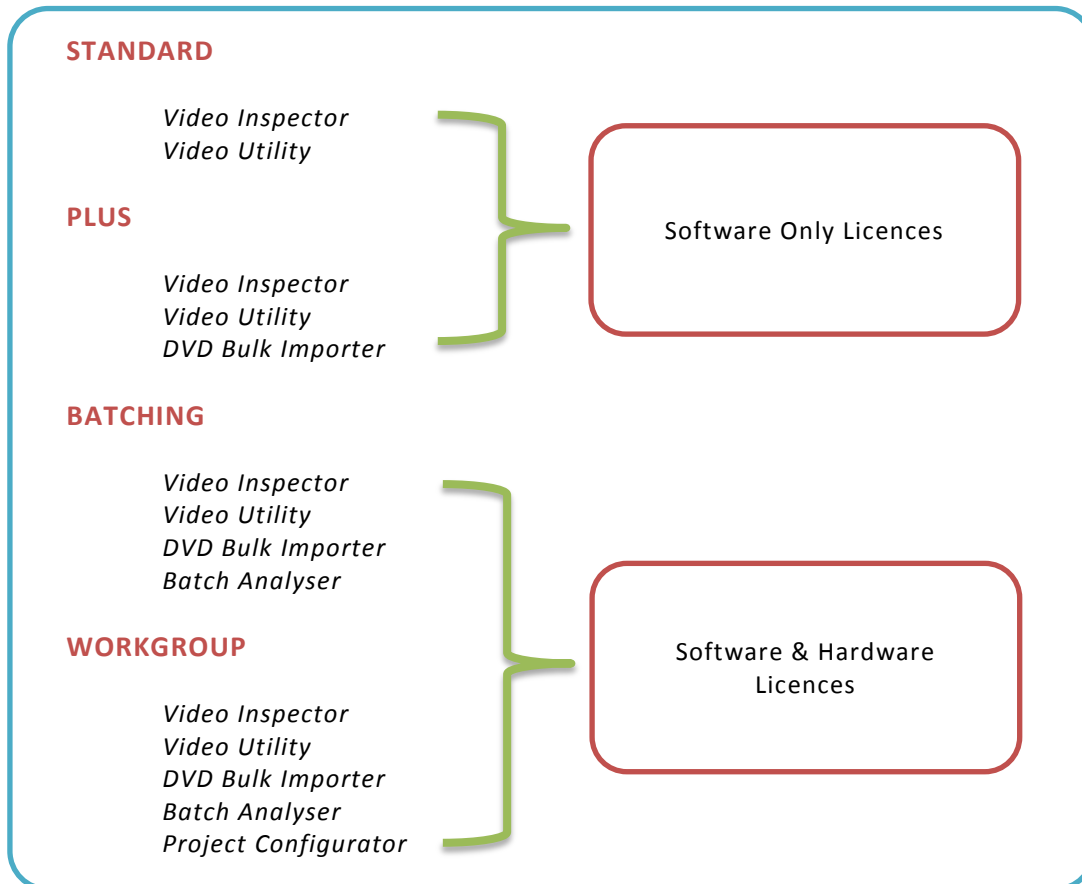
Once the process is complete, it will open the file generated automatically in the Notepad application. From here, you can save the file and send it to Scyron for analysis.

## Video Analysis Applications Tab

This tab displays the current applications available within this pack.

There are 4 licence options available for this pack, but you will always see all the applications displayed. If you select an application that you are not licenced to use, you will see a popup message informing you that you are not licenced to use that particular application.

The breakdowns of the licences available are:



## Scyron Updates Tab

The Scyron Updates tab takes you to the Scyron website where you can navigate to check out the latest information, or other solutions Scyron has to offer. You can also get contact information to raise a support call.

# Project Configurator

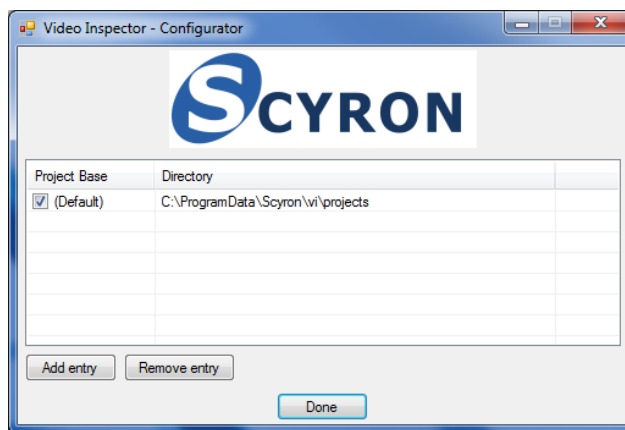
Available with WORKGROUP Licence

The project configurator utility allows you to specify where your project data is stored. This allows you the flexibility to share projects in the WORKGROUP offering of Video Inspector.

## Launch Project Configurator

To launch the Project Configurator, Click on the **[PROJECT CONFIGURATOR]** link from within the Scyron Launcher.

The Video Inspector – Configurator screen pops up (below)

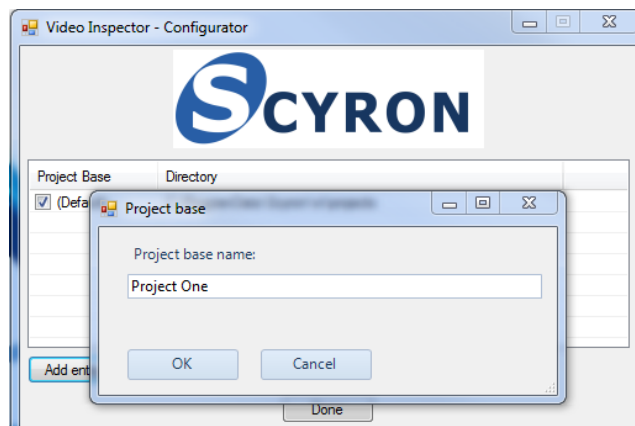


You can see from this screen shot, that the default project base is displayed where all the project information will be stored.

## Create New Project

If you want to add additional areas to store individual projects, click on the **[ADD ENTRY]** button.

Then browse to the location you want to store your new project information, and click **[MAKE NEW FOLDER]**, enter the name of the folder, and click **[OK]**



The Project Base screen pops up, for you to give it a reference name which is displayed on the Configurator page, and will also appear on the project screen within Video Inspector. Click **[OK]** to continue.

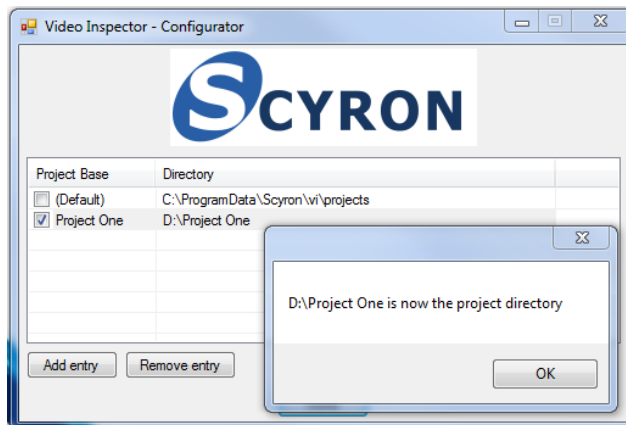


The Video Inspector – Configurator screen has now been updated with the new project base you created, which now displays the name of the project base, and its path to where the data will be stored.

You are able to use LOCAL, USB and NETWORK drives to store your projects, but these need to be common across your system.

### Select Default Project Base

If you wish to make “Project One” the default project location, tick the box next to the project name and click **[DONE]**



The message will then be displayed, confirming that the project you selected is the default project directory. Click **[OK]** to continue.

This will close the Project Configurator application, and return you to the Scyron Launcher.

## DVD Bulk Importer

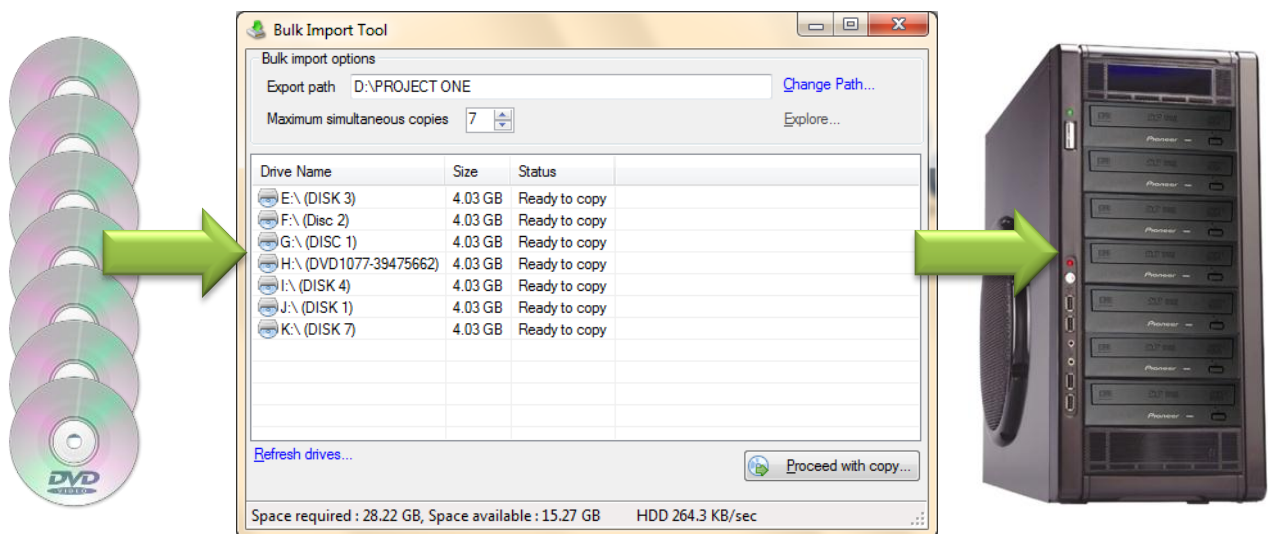
Available with **PLUS** Licence

The DVD bulk importer is designed to help you copy large amounts of your media discs to a location where they can then be used by the BATCH ANALYSER for overnight analysis.

### Launch DVD Bulk Importer

To launch the DVD Bulk Importer, Click on the **[DVD BULK IMPORTER]** link from within the Scyron Launcher.

The software used in conjunction with the VI7 workstation (included with the PLUS licence) allows you to insert up to 7 DVD's into the VI7 workstation, and then copy the entire contents to a location where they can be used for processing.



The diagram above shows the process of importing 7 DVD's into the VI7 workstation via DVD Bulk Importer.

From the example, you can see that drive H: has a disc labelled **DVD1077-39475662** which is a typical label created by the Ovation Afterburner which created the DVD.

When the DVD's are copied to the location chosen, you will need to rename the folders to something more recognisable such as your reference numbers so they can be identified later on in the process.

## DVD Bulk Importer Tour

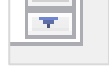
### Export Path

This is the location of where the DVD`s will be copied to.

### Change path

Click on the [\[CHANGE PATH\]](#) link to open up the Browser where you can proceed to navigate to the location you want the DVD`s to be copied to, and if required, **[MAKE NEW FOLDER]** at the location you choose.

### Maximum simultaneous copies

You can select the number of DVD`s you wish to copy at the same time. By clicking on the  up or down arrow you increase or decrease the number of DVD`s being copied.

If the number is smaller than the DVD`s you have inserted, for example 3, then it will copy the first 3 at the same time, and when they are finished, it will copy the next 3 and so on until all discs are copied.

### Refresh Drives

If you add drives after the Bulk Importer is launched, the screen may not be displaying the correct information, so click on the [\[REFRESH DRIVES\]](#) link, and it will re-examine the contents of the drives, and update the screen to reflect the changes.

### Proceed with Copy

Once you are ready to start, click on the **[PROCEED WITH COPY]** and this will launch the copy process. Depending on how many simultaneous copies you have selected, the disc copy screen will lay on top of each other until the discs have been copied. When each DVD has been copied, it will automatically eject until they are all ejected.

### Status Bar

The status bar displays the *"SPACE REQUIRED"* and *"SPACE AVAILABLE"* for the copy process. If the space available is smaller than the space required, then you will get a message saying you cannot proceed with the copy.

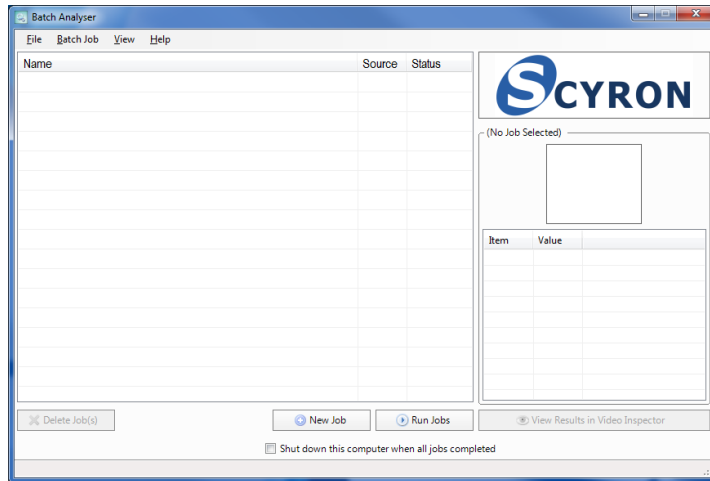
# Batch Analyser

Available with **BATCHING** and **WORKGROUP** Licences

The Batch Analyser is designed to help you analyse (phase 1) large amounts of your media discs and store the information in a central project location. This processing is to be performed outside office hours to maximise your working time production and analysis of the media. This leaves you free to perform phase 2 analysis on your batch analysed media.


## Launch Batch Analyser

To launch the Batch Analyser, Click on the **[BATCH ANALYSER]** link from within the Scyron Launcher.



## Batch Analyser Tour

### File Menu

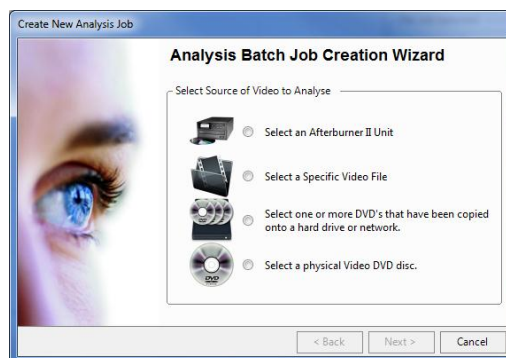
The file menu consists of one function, EXIT. To close the launcher, you can select **FILE / EXIT**, hold **[ALT] + [F4]** or click on the  in the top right of the application.

### Batch Job Menu

The batch job menu consists of the following options:

#### Add New Batch Job or click [NEW JOB]

Once you select the “Add New Batch Job” from the Batch Job menu, the Create New Analysis Job window is displayed with the following options:



### Ⓞ Select an Afterburner 2 Unit

Use this option if you have an afterburner 2 unit with a removable drive. Follow the manufacture instructions for how to attach it to the PC, and proceed with the wizard.

### ⊙ Select a Specific Video File

Use this option if you have a specific supported video file you want to analyse (phase 1) overnight.

Once you have navigated to the file(s) you want to add, click **[OPEN]** and then either click **[NEXT]** to go with the job name that has been generated, or modify the name. Click **[NEXT]** to continue. Click **[FINISH]** to exit the wizard.

You will be returned to the Batch Analyser main screen, where you will see the file you added, and its source as “file” status will be displayed as “CUED”.

### ⊙ Select one or more DVD`s that have been copied onto a hard drive or network

Select this option if you have either manually copied DVD`s to a location such as LOCAL, USB or NETWORK or used the Bulk DVD Importer to copy multiple discs.

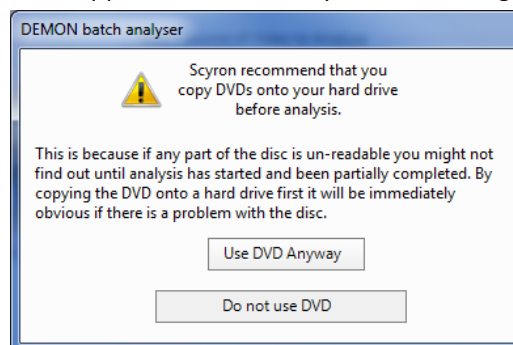
Click **[BROWSE]** to navigate to the location where your copied DVD`s are located. You only need to browse to the location of the top folder that holds the content of the multiple DVD`s. Once you have navigated there, click **[OK]**. Click **[NEXT]** to continue. On the “Select DVD Image(s) screen, you are now able to see all the entries for the DVD`s that are stored in this location. You can choose to add them all, add none, or select the ones you want by ticking them. Select the ones you want and click **[NEXT]** to continue. Click **[FINISH]** to complete and exit the wizard.

You will be returned to the Batch Analyser main screen, where you will see the file you added, and its source as “DVD” status will be displayed as “CUED”.

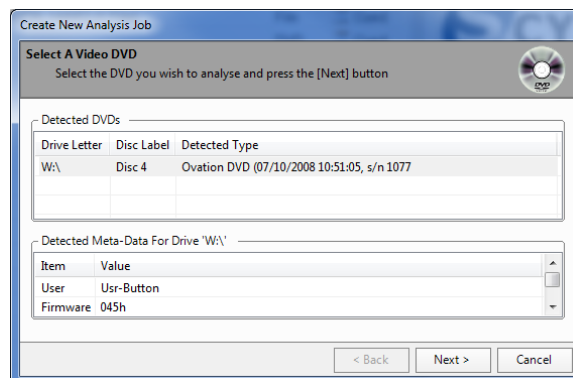
### ⊙ Select a physical Video DVD disc

Select this option if you want to add a physical disc to the batch analysis application.

When you select this option, you will be shown a disclaimer screen informing you that this is not the best way to use this application, but is still supported but warns you of the danger of using this method.



If you wish to proceed, click **[USE DVD ANYWAY]**.



Click **[NEXT]** to continue

You are provided with a label by default, which you can accept, or you can change it to something you prefer.

You will be returned to the Batch Analyser main screen, where you will see the file you added, and its source as “DVD (AB1)” status will be displayed as “CUED”.

#### Begin Processing or [RUN JOBS] button

Once your screen is populated with all the files you want to Batch Analyse, you are then able to launch the processing side of the application, where each file will be analysed (phase1) in turn until the list has been completed.

To start processing, select **Begin Processing** from the **Batch Job** menu or click on the **[RUN JOBS]** button.

#### Pause All Jobs

If you want to interrupt the processing, if you select **Pause all jobs** from the **Batch Job** menu, all the jobs following the one being processed will not run. It will complete the running job and then stop.

#### Delete Job or [DELETE JOB(s)] button

If you need to remove any cued jobs, select the job you want to delete, and select **Delete Job** from the **Batch Job** Menu or click on the **[DELETE JOB(s)]** button.

#### View Menu

The View menu consists of the following options:

##### Refresh Job Display

If you need to refresh the display queue, select **Refresh Job Display** from the **View** menu.

##### Current Log

To display the current log, select **Current Log** from the **View** menu. This will pop up a display box with green text to show the current processes that have been performed.

##### Previous Logs

To display the previous logs, select **Previous Logs** from the **View** menu. This will pop up a display box where you can select the log file you wish to view. The newest log file is the first on the list. Select the file you want and the contents will be displayed in the box below.

#### Help Menu

The View menu consists of the following options:

##### About

This displays the version number, build date and time and how long you have until your licence expires. Click **[OK]** to exit the about screen.

#### [NEW JOB]

Please refer to the section *“Add New Batch Job or click [NEW JOB]”* earlier in this section.

#### [RUN JOBS]

Please refer to the section *“Begin Processing or click [RUN JOBS]”* earlier in this section.

#### [VIEW RESULTS IN VIDEO INSPECTOR]

xxxxxxxxx

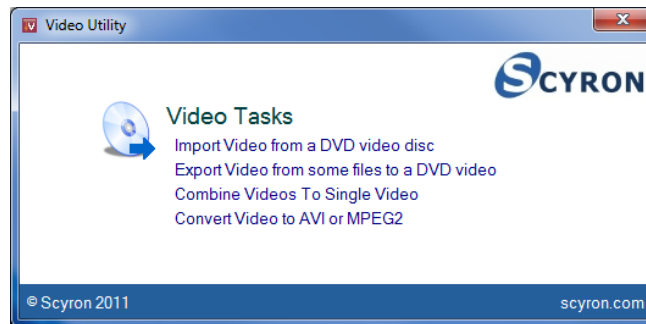
## Video Utilities

Available with STANDARD, PLUS, BATCHING and WORKGROUP Licences

The Video Utilities application designed to help you perform a number of video processing activities common to achieving your goals and the output files being a windows standard format that can be used in other Scyron and 3<sup>rd</sup> party applications.

### Launch Video Utilities

To launch the DVD Bulk Importer, Click on the **[VIDEO UTILITIES]** link from within the Scyron Launcher.

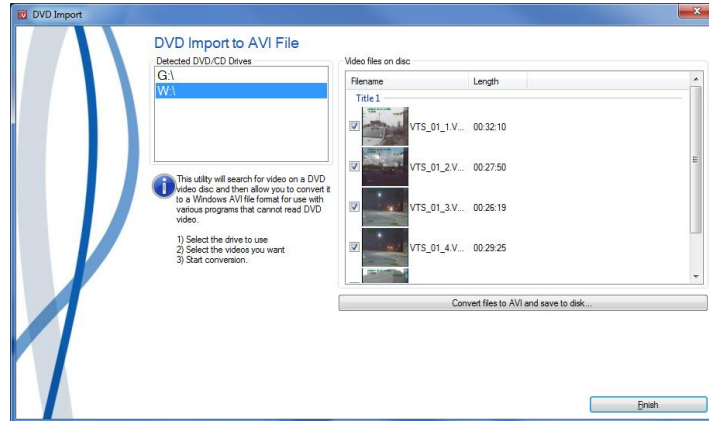


The video Utilities application is designed to perform the video tasks you need to end up with your project in a video format you can use, or output your work to a DVD that will work in a standard DVD player.

## Video Utilities Tour

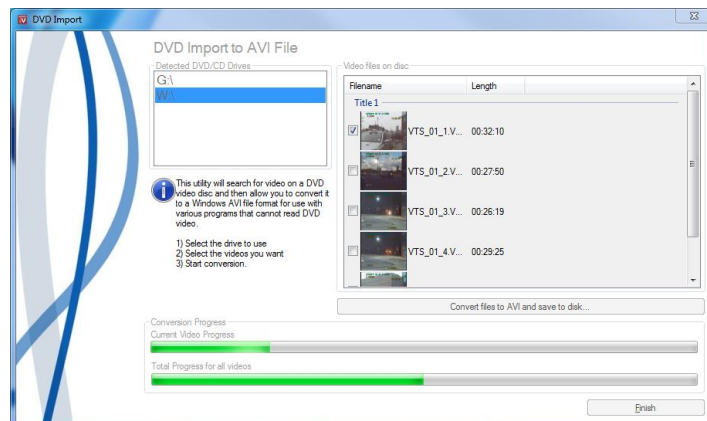
### Import Video from a DVD video Disc Wizard

When you select the link [Import Video from a DVD video disc](#) the DVD import wizard is launched, and interrogates your DVD drive to see if you have a video DVD inserted.



Once the DVD is recognised it proceeds to map out the contents of the DVD and you can then choose which part of the disc you want to create and AVI file.

Once you have selected the files, click on the [**CONVERT FILES TO AVI AND SAVE TO DISK**] and you will be asked to select the output folder. Browse to the location you want, and if necessary, create a new folder for your files to be saved into.



It will then begin the conversion process, and show you the progress of your conversion.

Once the conversion is complete you will see a message “**The conversion process has been completed**”, click [**OK**] to continue

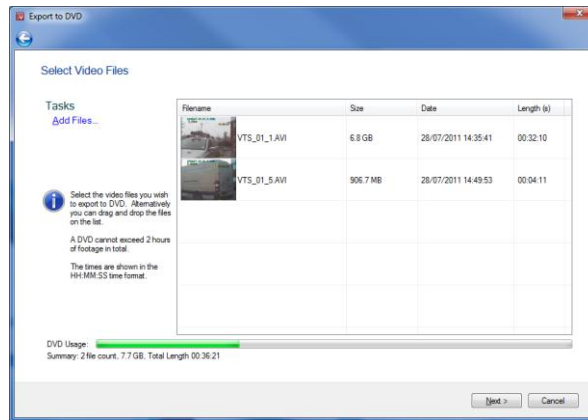
If you have finished converting items on this disc, click [**FINISH**], otherwise choose the files you want and repeat the process. This will return you to the Video Tasks screen.

## Export Video from some files to a DVD video

When you select the link [Export Video from some files to a DVD video](#) the DVD export wizard is launched.

Click **[NEXT]** to continue.

On the Export to DVD screen, click the link **[ADD FILES]** and browse to the location of your video files.

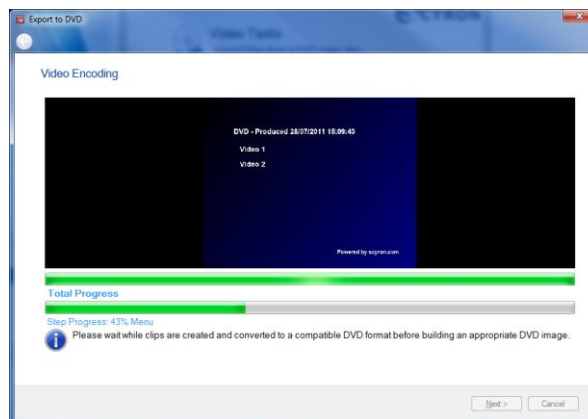


The DVD usage bar and summary details are updated as you add files informing you how much space you have remaining on the DVD, and if you add files in excess of this, you will be presented with a warning message.

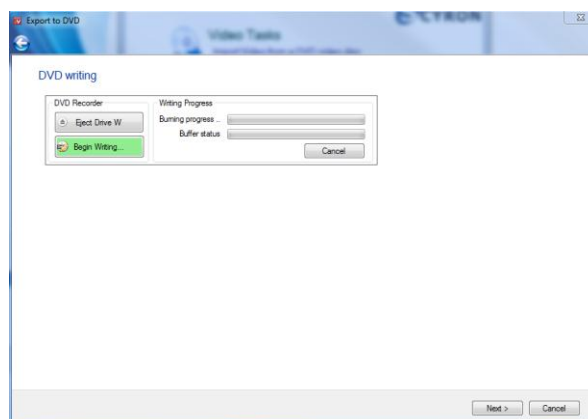
If you add files that are not supported, you will not see a thumbnail view of the footage. Instead you will see a black square.

When you have finished adding your files, click **[NEXT]**.

The video encoding process will now begin and you will see the progress screen.



The disc burning screen will display the status of your burning, and if you have multiple drives attached, you can burn up to 4 copies of your media at the same time.

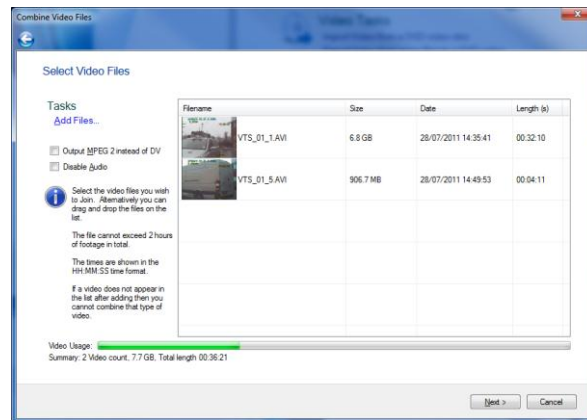


## Combine Video to Single Video

When you select the link [Combine Videos to Single Video](#) the Combine Videos wizard is launched.

Click **[NEXT]** to continue.

On the Select Video Files screen, click the link [\[ADD FILES\]](#) and browse to the location of your video files.



The video usage bar and summary details are updated as you add files informing you how much time (up to 2 hours) you have remaining, and if you add files in excess of this, you will be presented with a warning message.

The options:

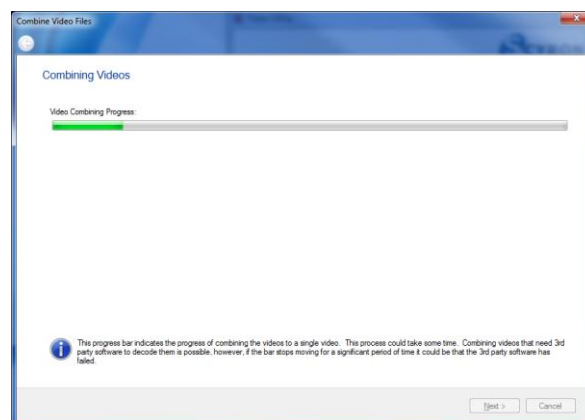
**Output MPEG 2 instead of DV** is selectable by ticking the box, in case the size of the file is too excessive, and you want to produce a smaller file that is not frame accurate, and may not work in all of Scyrons applications.

**Disable Audio** is selectable by ticking the box, in case you have problems doing the conversion, and by stripping out the audio, it will increase the chances of a successful conversion.

Click **[NEXT]** to continue.

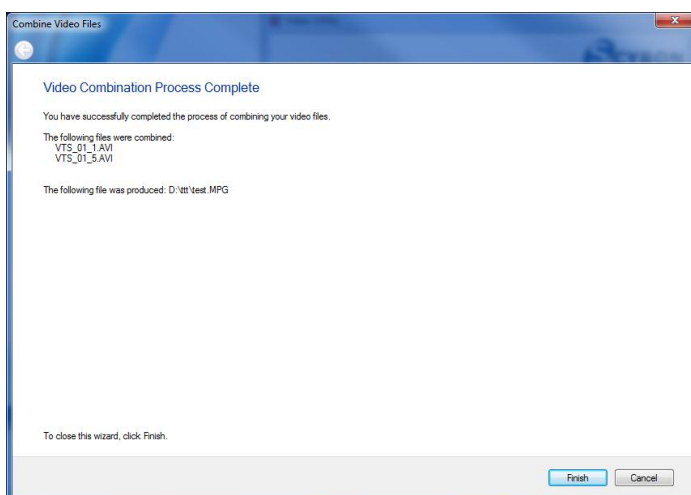
The “Save Output To” screen pops up, and you can then browse to the location you want to save the file to, and give it a filename.

The Combine Video Files progress screen is then displayed informing you of the status and progress of your video combine operation (below).



When the operation is completed, click **[NEXT]** to continue.

The Process Complete page is now displayed along with a summary of what was done, and the location of the file you have created (show below).



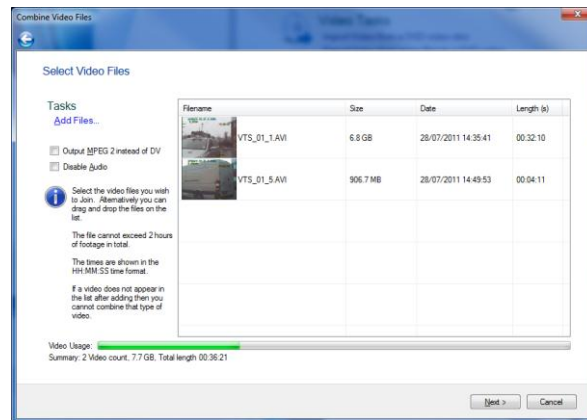
Click **[FINISH]** to end the wizard and return to Video Tasks.

## Convert Video to AVI or MPEG 2

When you select the link [Convert Video to AVI or MPEG2](#) the Combine Videos wizard is launched.

Click **[NEXT]** to continue.

On the Select Video Files screen, click the link [\[ADD FILES\]](#) and browse to the location of your video files.



The video usage bar and summary details are updated as you add files informing you how much time (up to 2 hours) you have remaining, and if you add files in excess of this, you will be presented with a warning message.

The options:

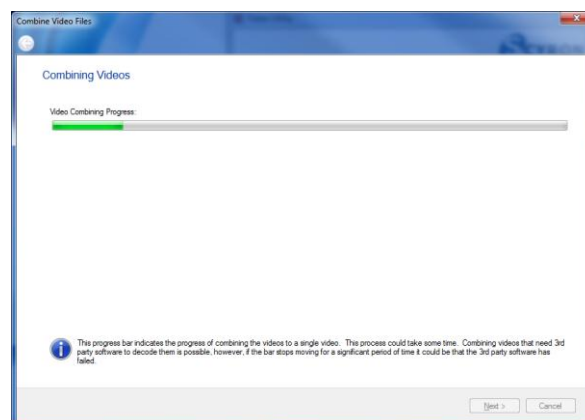
**Output MPEG 2 instead of DV** is selectable by ticking the box, in case the size of the file is too excessive, and you want to produce a smaller file that is not frame accurate, and may not work in all of Scyrons applications.

**Disable Audio** is selectable by ticking the box, in case you have problems doing the conversion, and by stripping out the audio, it will increase the chances of a successful conversion.

Click **[NEXT]** to continue.

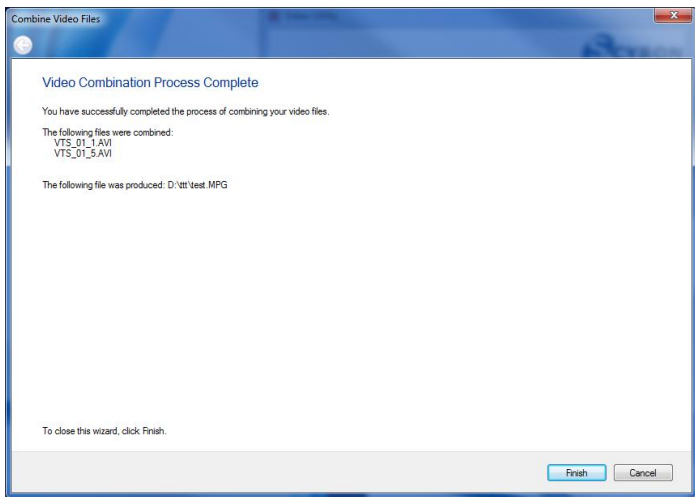
The "Save Output To" screen pops up, and you can then browse to the location you want to save the file to, and give it a filename.

The Combine Video Files progress screen is then displayed informing you of the status and progress of your video combine operation (below).



When the operation is completed, click **[NEXT]** to continue.

The Process Complete page is now displayed along with a summary of what was done, and the location of the file you have created (show below).



Click **[FINISH]** to end the wizard and return to Video Tasks.